

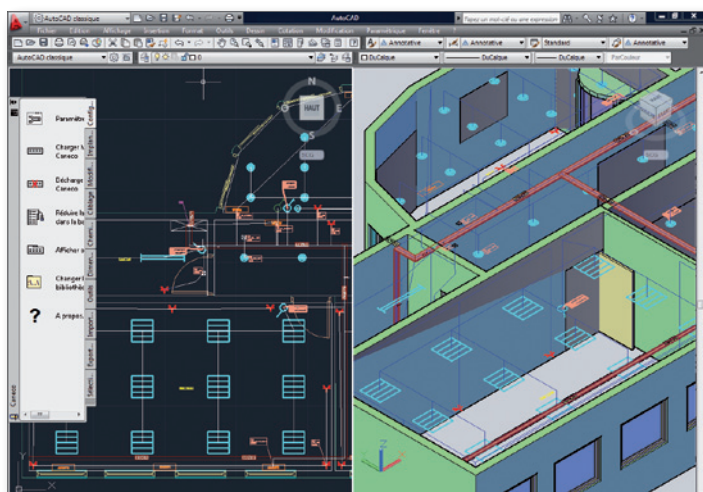


**Caneco Implantation** is a software that lets you lay out electrical equipment in 2D or 3D and route power and signals cables automatically. Designed for all electrical installation fields (residential, tertiary, industrial), **Caneco Implantation** can be used independently or in conjunction with Caneco BT for performing calculations and producing single-line diagrams. Power and signals equipment is positioned and wired on architect's plans and you can instantly obtain the bills of quantities, device parts lists, cable running schedules, etc.

# Laying out electrical equipment AND AUTOMATIC CABLE ROUTING

## Layout

- ▶ Convert your AutoCAD® blocks into Caneco electrical devices.
- ▶ Make use of your symbol libraries produced in AutoCAD® or Caneco Implantation.
- ▶ Directly import luminaires you have laid out in Dialux® after lighting calculations.



## Sizing and calculations

Interface your plans produced in Caneco Implantation with Caneco BT via a bidirectional link:

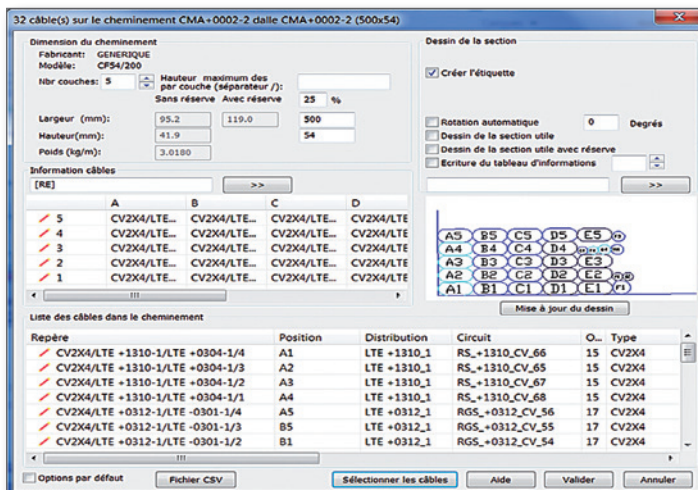
- ▶ Caneco Implantation circuits are exported to Caneco BT to size the cable cross-sections and protective devices.
- ▶ Your network is automatically optimized. Power circuits are certified by our approved calculation software.
- ▶ The cable cross-sections calculated by Caneco BT are directly re-imported back into Caneco Implantation.
- ▶ Cable trays etc. are automatically optimized on the layout drawing.

## Managing wiring

- ▶ Assign terminal devices and terminals to Caneco BT circuits. The cables are routed automatically, taking the optimum route via junction boxes, octopuses, and cable running systems.
- ▶ Configure cable segregation rules for cable paths.
- ▶ Manage the maximum number of layers of cables in cable paths.
- ▶ Produce cross-sectional views of your cable trays automatically.

## Collaboration

- ▶ Use graphics platforms:
  - AutoCAD®
  - AutoCAD® MEP
  - Revit® MEP
- ▶ Detect conflicts (HVAC, plumbing, architecture, electricity, etc.) using AutoCAD® MEP.
- ▶ Simplify verification meetings by following project modifications and developments.
- ▶ Optimize collaboration between contractors thanks to AutoCAD® MEP's project manager.



## Publishing

- ▶ Print out:
  - device parts lists and legends,
  - cable running schedule,
  - overall cable schedule, by cable tray section or cable tray run,
  - cross-section views,
  - cable tray support schedule.
- ▶ Automatically generate:
  - single-line distribution diagrams,
  - block diagrams for power and signals distribution,
  - equipment labels,
  - cables runs.

### LEGENDS AND PARTS LISTS IN AUTOCAD

Quantité	Nom	Nom du symbole
1	BP Sonnette	[Symbol]
25	Bloc autonome de sécurité 6V	[Symbol]
25	Bouton poussoir	[Symbol]
6	Bouton poussoir	[Symbol]
1	Centrale intrusion	[Symbol]
5	Extracteurs soufflage	[Symbol]
1	Hublot rond 1e52V	[Symbol]
1	Hublot rive 1e18V	[Symbol]
1	SI-2ne	[Symbol]
3	Spot 2x26V	[Symbol]
12	Spot 3x26V LED encastré Antoine	[Symbol]
3	Tube rond sellé fluo étanche 2x36V	[Symbol]
6	Type AIAppique 2x26V	[Symbol]
20	Type E1 4x18W encastré	[Symbol]
2	Type EG 4x14V sensor	[Symbol]
25	Type E4 3x36V encastré	[Symbol]
1	Type HI Hublot 52V	[Symbol]
1	Type HI Hublot 52V	[Symbol]
2	Type HI Hublot 52V	[Symbol]

### CABLE RUNNING SCHEDULE

Repartir de	Repartir de	Repartir de	Repartir de	Repartir de	Repartir de	Repartir de	Repartir de	Repartir de	Repartir de
1	2	3	4	5	6	7	8	9	10



## 4 good reasons for using Caneco Implantation

Caneco Implantation enhances the way AutoCAD® / AutoCAD® MEP / Revit® MEP handle electrical systems by offering:

- ▶ **More visible control** over the installation via detailed circuit management.
- ▶ **Optimized sizing results** in electrical calculation software like Caneco BT.
- ▶ Guaranteed **bidirectional link between Caneco BT cabinet diagram and layout plan**.
- ▶ **Production of all the documents required** for designing, producing, verifying, and maintaining the installation.

➔ **Using Caneco Implantation, you can reduce design time and improve the quality of your technical files thanks to modification tracking and automation of recurrent actions.**

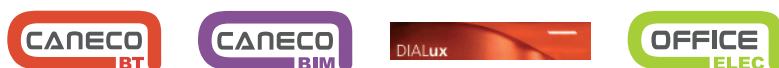
### Whom is it intended for?

- ▶ Design Office technicians.
- ▶ Project head draughtspersons.
- ▶ Operators and project owner new construction and maintenance services managers.

### Interface software

**AutoCAD®**    **AutoCAD®**  
MEP

### Additional software



### Updating, maintenance

Updates via CD-ROM or download from the ALPI website; ALPI provides phone support for customers with maintenance contracts.

### Training

Caneco Implantation is intended for users who are already very familiar with the AutoCAD® or AutoCAD® MEP environment in the electrical field.

In order to use Caneco Implantation to the full, we recommend a two-day training course.

### Computer configuration

Environment: Windows 2000, XP, Vista, W7, W8 (32 and 64 bits).

Current AutoCAD® or AutoCAD® MEP or Revit® MEP installed.

4 GB RAM recommended.

Protection via dongle (USB) or FlexLM (network).

