



**Caneco EP** is a software application used to design and audit High/Low voltage public lighting networks, based on the requirements of the IEC 364 international standard.

**Caneco EP** automatically defines the most suitable and cost-effective protective devices and cable cross-sections.

Its AutoCAD® add-on, **Caneco EP-Implantation**, transfers ground plan layout data to **Caneco EP** so it can perform the full calculations of a simple or complex network.

## Audit & Design Solutions for PUBLIC LIGHTING NETWORKS

### Caneco EP-Implantation: Graphic input tool

Caneco EP-Implantation enables you to overlay electrical equipment diagrams featuring transformers, power arrivals, lamp posts, lamps, installation methods and inspection holes, etc. on the AutoCAD blueprint.

Caneco EP-Implantation automatically generates:

- ▶ Equipment connections from power outlets to end consumers;
- ▶ Cable routing (sleeve, overhead, underground, gutter);
- ▶ Cable lengths;
- ▶ Nomenclatures;
- ▶ Labels and keys.

**Save time by transferring all your data from Caneco EP-Implantation to Caneco EP.**

### Caneco EP: Installation dimensioning software

Caneco EP produces a full calculation of a public lighting network by defining cable cross-sections and protective devices and by setting their values.

Caneco EP can also audit an existing network to ensure its compliance with national or international standards.

#### Economy:

Caneco EP sizes the network as cost-effectively as possible, by defining the lowest installation, hardware and labour costs:

- ▶ Outgoing protection systems on lowest nominal current, taking into account the type of ballast (electronic or ferromagnetic),
- ▶ Most economical cable cross-section combinations.

#### Safety:

Caneco EP sizing meets the requirements of IEC 364, which ensures that the system is both compliant and safe:

- ▶ Overload condition (current transport capacity);
- ▶ Voltage drop (whilst in operation and during the light-up phase);
- ▶ Human protection against indirect contact;
- ▶ Short-circuit currents.

#### Applications:

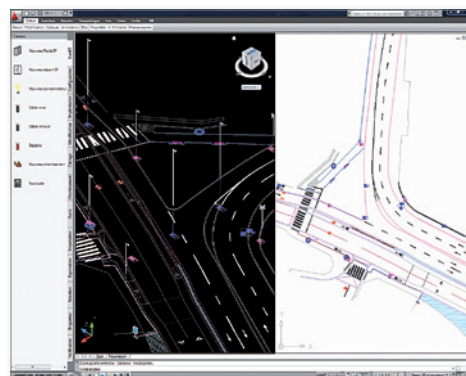
Caneco EP can calculate the most complex public lighting networks: meshed networks, irregular spacing of lighting points, mix of High and/or Low voltage supplies (HV/LV-PL) and multiple levels of protection.

#### Extendibility:

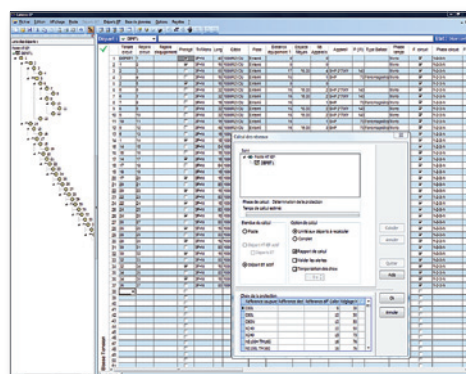
The flexibility of Caneco EP means you can incorporate the right calculation margins for future network extensions.

### From schematics to calculation notes:

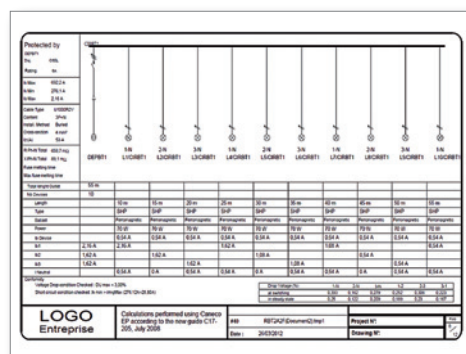
#### 1. Position your equipments



#### 2. Transfer data to Caneco EP



#### 3. Produce a comprehensive technical folder



## 8 good reasons for choosing Caneco EP + Caneco EP-Implantation

### Ease of use

The user-friendly interface means you can get to grips with Caneco EP very quickly and design your public lighting network in a few clicks.

### Time saving

All data input into AutoCAD with Caneco EP-Implantation can be integrally imported into Caneco EP, saving a great deal of time in project design.

### Safety during new project design

Caneco EP meets the requirements of the specific outdoor lighting standard (IEC 364). It ensures the proper operation of street lamps and the network and provides user protection.

### Audit existing installations

Input your existing public lighting system into the software to facilitate technical monitoring, ensure the compliance of your projects and make it easy to extend installations.

### Create mandatory documents

Caneco EP generates a comprehensive technical folder to meet the requirements of control bodies and clients (folio list, network diagram, substation data, calculation notes, single-line diagrams and nomenclatures).

### Quality design work

With Caneco EP, you provide the project manager with an acknowledged working format and high-level deliverables: guaranteed compliance, lower costs and the complete design document package.

### Multi-manufacturer databases

Caneco EP integrates various manufacturer databases of cables, circuit breakers, fuses and lamps. These database files can be modified or completed by the user.

### Flexibility to include all public lighting specificities

Caneco EP is designed to cost-effectively size public lighting systems and integrate their specific characteristics. It is an essential design tool for public lighting installations in urban, rural or highway environments. It can also be used on lighting systems for tunnels, industrial sites, parks, monuments and decorative lighting.

### Who is it intended for?

The software suite is intended for:

- ▶ Electrical engineers, to design and audit public lighting networks.
- ▶ Project stakeholders involved from the initial design to the final completion of public lighting networks.
- ▶ Surveyors responsible for design option decisions concerning the network power supply.
- ▶ Local authority technical departments, Engineers, Electrical contractors, Building owners, etc.

### Updates & maintenance

The yearly maintenance contract feature many benefits, such as technical support by highly skilled engineers (Phone, e-mail and fax), software updates (latest features), manufacturer catalogue downloads (latest catalogues), standard updates and access to technical notes.

### Training

Get the most from your software. ALPI provides Caneco software training for all skill levels.

### References

The following companies (amongst many others) use Caneco EP to design their projects: EIFFAGE, BOUYGUES and SPIE.

Local communities: The public lighting departments of local authorities and urban communities use Caneco EP to inspect, upgrade for compliance or extend their existing networks and to issue sizing directives to subcontractors.

### Hardware/software configuration

Operating systems: Windows NT, 2000, XP, Vista, Seven

Electronic dongle protection (USB or FlexLM)

Caneco EP exists in both stand-alone PC and network versions.

**Caneco EP-Implantation is a module of Caneco EP** and therefore can only be used on a PC running Caneco EP release 3.4.2 or later and AutoCAD® full version, 2007 or later.



[www.alpi-software.com](http://www.alpi-software.com)

+33 (0)1 47 52 95 41 - [info@alpi-software.com](mailto:info@alpi-software.com)

