



Caneco BT is an application for automatic diagrams and sizing for Low Voltage electrical installations. A European leader in this field, it takes account of numerous national and international standards including **IEC 60364, HD 384, BS 7671 and NF C 15-100.**

Caneco BT uses a multi-manufacturer database to economically determine wiring systems and all the distribution accessories.

It produces all the diagrams and documents required for designing, producing, verifying, and maintaining the electrical installation.

LOW VOLTAGE ELECTRICAL installation diagrams and calculation

Enjoy the benefit of software that offers "calculations + diagrams"

- ▶ The switchboard single-line diagram functions make Caneco BT a genuine diagram application. It is the only software in this category to warrant the label "calculations + diagrams".
- ▶ Choose schematized circuits from the Caneco library (power circuits and control circuits).
- ▶ Enter or modify the circuit data. They are drawn automatically in the cabinet diagrams.
- ▶ Draw and number terminals, devices, connected phases, earth bars, etc. automatically.
- ▶ Process all the circuits in your project.

Optimize entering project circuit details using three interconnected modes:

- ▶ Network single-line for an overall view.
- ▶ Excel spreadsheet mode for fast data entry.
- ▶ Board single-line for detailed diagrams.

Manage your documentation

- ▶ Create and customize print folders.
- ▶ Add folios created in AutoCAD® or Word, etc.

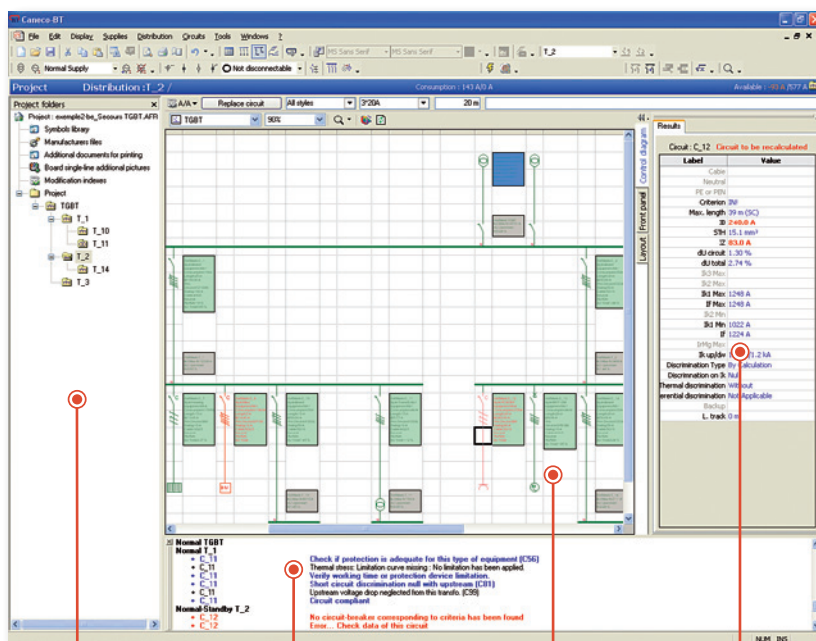
Share your data easily

- ▶ DXF format for exporting to CAD solution like AutoCAD® Electrical.
- ▶ XLS format Import/Export to Excel.
- ▶ Calculation data transfer to Caneco Implantation.

Save money with the expert calculation engine

The Caneco BT calculation engine determines the most economical equipment: protective devices, cable, busbar trunking systems, as well as disconnection devices and cable running systems, taking account of:

- ▶ All the standards conditions.
- ▶ Cascading (backup), co-ordination, and limiting effect; thus offering important cost-saving opportunities on equipment (cables, disconnection elements).
- ▶ All the constraints on the installation (Normal, Standby supplies, inverters) which it summarizes.
- ▶ Circuit phase balancing.



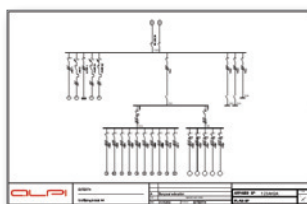
Tree diagram for your project

Calculation report

Network single-line

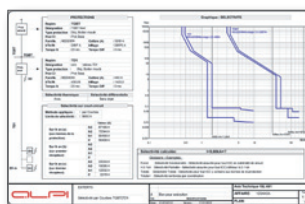
Results window

BOARD SINGLE-LINE DIAGRAM



CALCULATION SHEET

DISCRIMINATION



NOMENCLATURE



10 good reasons for choosing Caneco BT

Exhaustive calculations

Caneco BT performs all the calculations within one program without having to re-enter data: cable and disconnection / protective device sizing, power requirement, phase balancing, power discrimination, differential discrimination, discrimination using curves, back-up, limiting effect.

Automatic diagrams

Caneco BT automatically produces the two types of single-line diagrams for an LV electrical installation:

- ▶ the network single-line diagram for the whole installation,
- ▶ detailed single-line diagrams for each switchboard.

Speed

Caneco BT's spreadsheet and inspector allow fast data entry for big projects. The automatic calculation does the rest.

Economy and safety

Caneco BT automatically looks for the most economic solution, while including all the requirements of the standard, for cables, protective devices, and disconnection devices alike.

Compare protection technologies

You can compare 'circuit-breaker', 'fuse', and 'fuse + circuit-breaker' solutions.

Openness

Caneco BT allows you to generate data and graphics files in the industry-standard formats (DXF, XLS, ASCII, XML, etc.).

Multi-manufacturer

Caneco's publisher ALPI is independent of the manufacturers and technical inspection bodies. This independence guarantees the results will be objective. In this way, you can change device manufacturer at any moment for all or part of the installation.

Multi-standard

Caneco BT can incorporate up to 14 national and international standards, together with the Marine standard (see version descriptions).

Multi-language

Caneco BT is available in 7 interface languages. You can print out your design documents in 9 languages (see version descriptions).

High-quality additional services

ALPI has been publishing for over twenty years and has become a preferred partner for electrical engineers.

Its phone support services are provided by specialists with a comprehensive command of the software, standards, and electrical devices.

Whom is it intended for?

- ▶ "Low voltage power distribution" specialists in design offices, with operators, independent consulting engineers, or the installer's own designers.
- ▶ Project owner new construction and maintenance services managers.

Additional software



Updating, maintenance

Annual maintenance contract comprising phone support, software updates to follow changes in standards, and updates to manufacturer files.

Training

To make best use of Caneco BT, we recommend attending one of the ALPI training courses.

Recommended configuration

Windows NT, SP4, 2000, XP, Vista, W7, W8 environment (32 and 64 bits).

Protection by dongle (parallel port or USB) or software key (FlexLM).



www.alpi-software.com

+33 (0)1 41 32 28 28 - info@alpi-software.com

