

## **CANECO IMPLANTATION**

Version 2.5

**Installation of electrical equipment and automatic wiring**



## Table of Contents

<b>A</b>	<b>Introduction</b>	<b>3</b>
A.a	Overview	3
A.b	Required knowledge	3
A.c	Annotations	3
<b>B</b>	<b>Installation procedure</b>	<b>4</b>
<b>C</b>	<b>Prerequisite</b>	<b>5</b>
C.a	System requirements	5
C.b	Compatibility	5
C.c	Software acquisition	5
<b>D</b>	<b>Softkey protection</b>	<b>6</b>
D.a	Dongle on user workstation	6
D.a.a	A key dedicated to Caneco Implantation software	6
D.a.b	A Caneco LV software module key	6
D.b	Dongle on server workstation	6
D.b.a	A key dedicated to Caneco Implantation software	6
D.b.b	A Caneco LV software module key	6
D.c	Softkey on server workstation	7
D.c.a	A key dedicated to Caneco Implantation software	7
D.c.b	A Caneco LV software module key	7
<b>E</b>	<b>Starting the software setup menu</b>	<b>7</b>
<b>F</b>	<b>Installing the license manager on server workstation</b>	<b>8</b>
F.a	Preparedness	8
F.a.a	Identifying the installed version	8
F.a.b	Identifying the version of the software installation CD	8
F.b	Installing the license manager on server workstation	8
<b>G</b>	<b>Configuring Dongle on server workstation</b>	<b>10</b>
G.a	Installing drivers / key drivers	10
G.b	Install Dongle service	11
G.b.a	Install // or USB Smartkey service	11
G.b.b	Installing USB NetRockey service	11
<b>H</b>	<b>Configuring Softkey on server workstation</b>	<b>12</b>
H.a	Preliminary preparation	12
H.a.a	Identifying the Imgrd.exe and caneco.exe version which is installed	12
H.a.b	Check for previous version of "Imgrd.exe" and "caneco.exe"	12
H.b	Configuring "Flexlm" Softkey service	14
H.b.a	Configuring the service in "FlexLm Lmttools":	14
H.b.b	Starting the service in "FlexLm Lmttools":	16
H.c	Activating the license on the server	16
H.c.a	Immediate sending via email from that workstation (the key server)	18
H.c.b	Forwarding via e-mail from another workstation connected to the Internet	19
H.d	Installing an ALPI activation file	19
H.d.a	Preliminary preparation	19
H.d.b	Configuring the ALPI activation file	19
H.d.c	Stopping and restarting the "Flexlm" Softkey service	21
<b>I</b>	<b>Software installation</b>	<b>22</b>
I.a	Installing Caneco Implantation OEM	22
I.b	Installing Caneco Implantation V2.5.1	23

<b><u>J</u></b>	<b><u>Configuring license key in the license manager on user workstation</u></b>	<b><u>24</u></b>
J.a	Dedicated Dongle on user workstation of the CIM or CIM-RK type	24
J.b	Dedicated Dongle on user workstation of the CIR or CIR-RK type	25
J.c	Dedicated Softkey on the server workstation of the SCIR type	26
J.d	Dongle module key on user workstation of the BTM BTM-RK, BTR, BTR-RK, SBTR type	27
<b><u>K</u></b>	<b><u>Software start-up</u></b>	<b><u>28</u></b>
<b><u>L</u></b>	<b><u>Configuring the firewall</u></b>	<b><u>29</u></b>
L.a	Eutron SmartKey dongle	29
L.b	Rockey dongle	29
L.c	Flexlm softkey	29
<b><u>M</u></b>	<b><u>Advanced configuration of the "Flexlm" service</u></b>	<b><u>30</u></b>
M.a	How to define advanced configuration	30
M.a.a	Adding an option file	30
M.a.b	Changing option file	30
M.a.c	Content of the option file	30
M.b	Examples of advanced configurations	31
M.b.a	Access to the network license: include/exclude users	31
M.b.b	Network license borrowing: set a limit	32
M.b.c	Network license borrowing: include/exclude users	32
<b><u>N</u></b>	<b><u>Troubleshooting</u></b>	<b><u>34</u></b>

## A Introduction

---

### A.a Overview

The installation guide is intended to outline compatibilities, software installation and key protections, and the start of the software.

---

### A.b Required knowledge

The installation guide is intended for **"users familiar with Windows environment."** A thorough knowledge of the use of Windows environment standard items is required.

---

### A.c Annotations

The manual contains descriptions of five types of annotations:



Means information



Means Caution



Means See also




















Means a tip



Means an operation to be performed

## B Installation procedure

<b>Prerequisite</b>	 "System requirements"  "Compatibility"  "Software acquisition"
<b>Key protection</b>	 "Dongle on user workstation"  "Dongle on server workstation"  "Softkey on server workstation"
<b>Starting the software setup menu</b>	 "Starting the software setup menu"
<b>Installing the license manager on server workstation</b>	<p>For dongles on server workstation:</p>  "Installing the license manager on server workstation " <p>For softkeys on server workstation:</p>  "Installing the license manager on server workstation"
<b>Configuring license key in the license manager on server workstation</b>	<p>For dongles on server workstation:</p>  "Configuring Dongle on server workstation" <p>For softkeys on server workstation:</p>  " Configuring Softkey on server workstation"
<b>Software installation</b>	 "Software installation"
<b>Configuring the license manager on user workstation</b>	 "Dedicated Dongle on user workstation of the CIM or CIM-RK type"  "Dedicated Dongle on user workstation of the CIR or CIR-RK type"  "Dedicated Softkey on the server workstation of the SCIR type"  "Dongle module key on user workstation of the BTM BTM-RK, BTR, BTR-RK, SBTR type"
<b>Software start-up</b>	 "Software start-up"

## **C Prerequisite**

---

### **C.a System requirements**

Caneco Implantation requires the following minimum system configuration:

- Processor: Pentium4.
- RAM: 512 Megabytes.
- Monitor: 19".
- Windows XP Professional, Vista or 7.

---

### **C.b Compatibility**

Caneco Implantation V2.5.1 compatible with:

- 32-bit Autodesk product from 2007 to 2012 with 32-bit Windows XP, Vista, 7.
- 64-bit Autodesk product from 2010 to 2012 with 64-bit Windows XP, Vista, 7.
- Caneco Implantation 32-bit OEM 2008 with 32-bit Windows XP, Vista, 7.
- Caneco Implantation 32-bit OEM 2011 with 32-bit Windows XP, Vista, 7.
- Caneco Implantation 64-bit OEM 2011 with 64-bit Windows XP, Vista, 7.
- Caneco LV 5.2 and Caneco LV 5.3

Caneco Implementation V2.5.1 not compatible with:

- Autodesk product earlier than 2007.
- Autodesk product later than 2012.
- Autodesk LT product.
- Caneco LV earlier than 5.2.
- Caneco LV earlier than 5.3.

---

### **C.c Software acquisition**

Installing Caneco Implantation requires Caneco Implantation installer:

- Available on the installation CD of Caneco implantation.

## D Softkey protection

The program is protected by a key. The key checks that you are authorized to use the software installed on your computer, according to the terms of your license.

This protection using a key is set when the software is purchased from the company ALPI.

According to the company's organization and configuration, protection can be installed in 3 ways.

---

### D.a Dongle on user workstation

Dongle is a key on a "USB" or "parallel" port connected to the user workstation. This key can be defined in two ways:

#### D.a.a A key dedicated to Caneco Implantation software

Named "CIMXXX" or "CIM-RKXXX" where XXX is an unique key number. A dedicated key allows the user to be independent from other ALPI software; it can be installed on the same workstation as any other ALPI software or on another workstation dedicated to Caneco Implantation software.

#### D.a.b A Caneco LV software module key

Named "BTMXXX" or "BTM-RKXXX" where XXX is an unique key number. A Caneco LV software module key allows the user to have only one key installed on the workstation. It opens the 2 software at the same time. However, as a result, Caneco Implantation software becomes dependent on Caneco LV software. Caneco Implantation must be installed on the same workstation as Caneco LV.

---

### D.b Dongle on server workstation

The dongle is a key on a "USB" or "parallel" port connected to the user workstation. The user workstation connected to the network borrows a token / license to run the software and returns the token / license when software closes. The number of token / license borrowing is limited by the number of user accesses.

This key can be defined in two ways:

#### D.b.a A key dedicated to Caneco Implantation software

Named "CIRXXX" or "CIR-RKXXX" where XXX is an unique key number. A dedicated key allows the user to be independent FROM other ALPI software. Each user borrows a token / license pertaining to Caneco Implantation software.

#### D.b.b A Caneco LV software module key

Named "BTRXXX" where XXX is an unique key number. A module key allows the user to have only one key installed on the server workstation. Each user borrows a token to open Caneco LV or Caneco Implantation. If the access number is limited to 1 token and one of software is open, the user must wait for the closing of one of software to open.

Named "BTR-RKXXX" where XXX is an unique key number. Each user borrows a license to open Caneco LV or Caneco Implantation. If the access number is limited to 1 license and one of software is open, the user must wait for the closing of one of software to open.

## D.c Softkey on server workstation

The softkey is a file containing all licenses installed on the server workstation. The user workstation connected to the network borrows a token / license to run the software and returns the token / license when software closes. The user can also apply for a license borrowing for a while and returns the license at the end date of borrowing; this enables use of software without the user being connected to the network. The number of token / license borrowing is limited by the number of user accesses.

This key can be defined in two ways:

### D.c.a A key dedicated to Caneco Implantation software

Named "SCIRXXX" where XXX is an unique key number. A dedicated key allows the user to be independent from other ALPI software. Each user borrows a token / license pertaining to Caneco Implantation software.

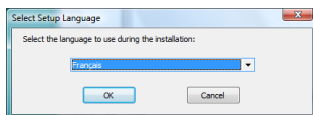
### D.c.b A Caneco LV software module key

Named "SBTRXXX" where XXX is an unique key number. Each user borrows a license to open Caneco LV or Caneco Implantation. If the access number is limited to 1 license and one of software is open, the user must wait for the closing of one of software to open.

## E Starting the software setup menu

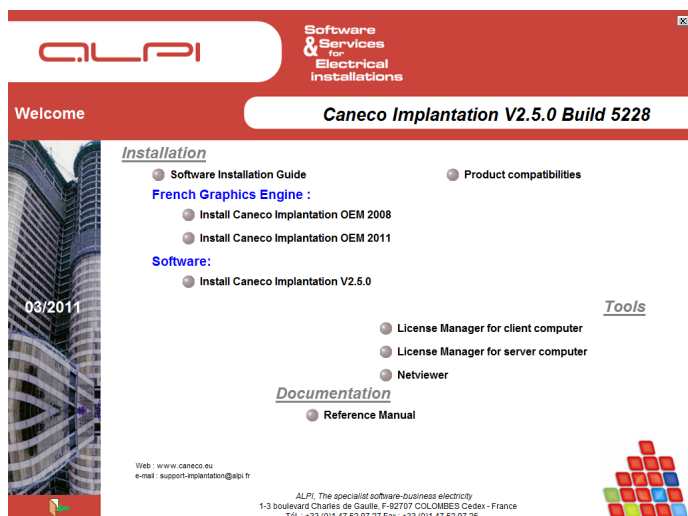
→ Insert the software installation CD into the drive.

→ Automatic start of the installation or manually in Windows Explorer, go to the root of the CD drive and run "Setup.exe".




→ Select the language of the installation wizard; click the "OK" button to confirm.

→ Display of the installation menu.



## F Installing the license manager on server workstation




For dongles on user workstation of "CIM", "CIM-RK", "BTM", or "BTM-RK type, proceed to  "Software installation".

The license manager on the "ALPImServer" server workstation enables to install and configure Dongle and Softkey services on the server workstation. It is common to any ALPI software.

### F.a Preparedness



If no version is installed, go to  "Installing the license manager on server workstation".

#### F.a.a Identifying the installed version

→ Start the license manager on server workstation:

Start > Programs > ALPI > ALPI License Manager (Server)> ALPImServer.

or,

Start > All programs > ALPI > ALPI License Manager (Server)> ALPImServer.


→ Note the version number at the bottom right of the window of [A.B.C.D] type.

#### F.a.b Identifying the version of the software installation CD

→ From Windows Explorer, go to:

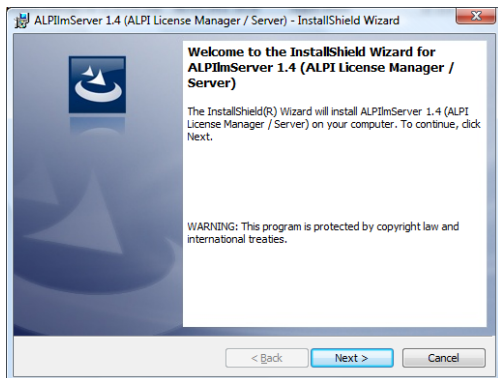
"XX:\Tools\ SetupALPImServer-[A.B.C.D].exe" where:

- XX is the DVD/CD-ROM drive
- [A.B.C.D] is the version number

→ If the version number installed is older, go to  "Installing the license manager on server workstation".

## F.b Installing the license manager on server workstation

→ Click on "License manager on the server workstation" in the menu on the installation CD.



→ "Welcome" dialogue box is displayed, click "Next".

→ "Customer Information" dialogue box is displayed, enter the

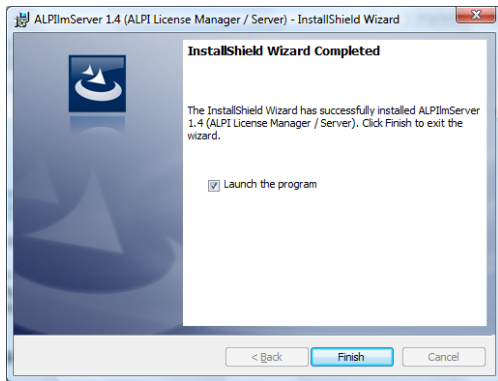
- "Username"
- "Organization"

Then click "Next".

→ "Target folder" dialogue box is displayed, either:

- Leave the default destination folder and click "Next".
- Change the target folder, select a directory and then click "Next".

→ "Installation ready to start" dialogue box is displayed, click "Install".



→ "End of Installation" dialogue box is displayed, check "Launch the program", and then click "Finish".

The license manager on the "ALPIImServer" server workstation starts automatically.

→ Go to license manager on server workstation configuration according to key type:



"Configuring Dongle on server workstation"

"



## Configuring Softkey on server workstation"

### G Configuring Dongle on server workstation



If a dongle of the "hex" or "BTR-RK" type has already been installed and configured during the installation of Caneco LV, go to "Software installation".

#### G.a Installing drivers / key drivers

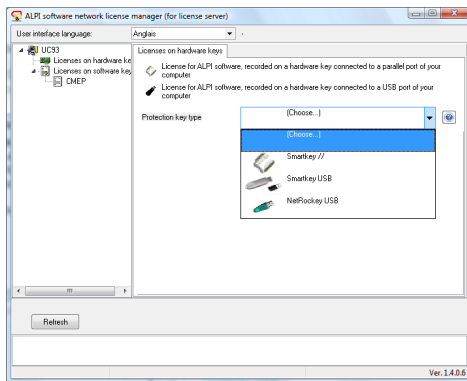
After starting the license manager on the server workstation either:

- Automatically after "Installing the license manager on server workstation".
- Manually by:

Start > Programs > ALPI > ALPI License Manager (Server)> ALPIImServer.

or,

Start > All programs > ALPI > ALPI License Manager (Server)> ALPIImServer.



→ In the tree structure on the left of the dialogue box, click "Licenses on hardware key" (Dongle licenses).

→ "Licenses on software key", tab is displayed to the right of the dialogue box.

→ Select from the "Protection key type" drop down list:

- // Smartkey
- USB SmartKey
- USB NetRocky

→ In the "Eutron Smartkey driver" box, click on the button(s) "Installer" (Install) to install:

- Key driver on parallel port
- Key driver on USB port

## G.b Install Dongle service

### G.b.a Install // or USB Smartkey service

After selecting "// Smartkey" or "USB SmartKey" from the "Protection key type" drop down list:

→ In the "Eutron network key service", click " Start Eutron SCC".

→ "Smartkey Configuration Central" dialogue box is displayed.

→ Go to the "Multilan Service" tab

→ Under the "Configuration" box, click the "TCP/IP" check mark.

→ The "Port" field becomes ungrayed, enter the value 5500.

→ The "Timeout" field becomes ungrayed, enter the value 900.

Click on the "Apply" button

→ In the "Operation" box, the "install" check mark is automatically checked.

→ Click on "OK" button to exit and the Dongle service is installed.

### G.b.b Installing USB NetRockey service

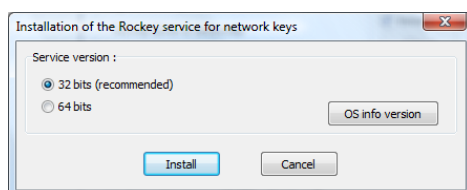
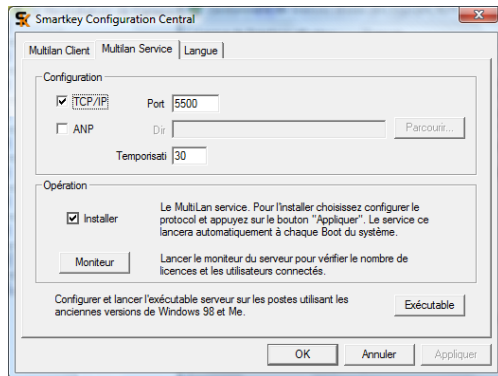
After selecting "NetRockey" from the "Protection key type" drop down list:

→ In the "Network Rockey by service", click "Install".

→ The "Installation of the Rockey service for network keys" dialogue box is displayed.


→ Select the "32-bits" or "64-bits" service version according to Windows version which is installed.

→ Click on the "Install" button.



## H Configuring Softkey on server workstation



If a softkey of the "SBTR" type has already been configured during the installation of Caneco LV, go to  "Software installation".

---

### H.a Preliminary preparation

The "Flexlm" key service which protects ALPI programs is provided in the form of 2 daemons ("lmgrd.exe" and "caneco.exe") which will be used as Windows Services on the server .

To prevent server reboot during installation, these services are not automatically installed (this would require stopping / restarting services). The services are therefore installed manually.

#### H.a.a Identifying the lmgrd.exe and caneco.exe version which is installed

To identify the "lmgrd.exe" and "caneco.exe" version which is installed with the license manager on the "ALPIImServer" server workstation in the ALPI service installation directory "Flexlm" (1), from the Windows Explorer:

→ Go to the ALPI service installation directory "Flexlm" (1), default directory sample:

- (1) "C:\Program Files\ALPI\Network License Manager\Flexlm Service Install" for 32-bit Windows.  
or,  
"C:\Program Files (x86)\ALPI\Network License Manager\Flexlm Service Install" for 64-bit Windows.

→ Identify and record the date and version of the "lmgrd.exe" and "caneco.exe" files

#### H.a.b Check for previous version of "lmgrd.exe" and "caneco.exe"

To check for previous version of lmgrd.exe and caneco.exe in the working ALPI license directory "Flexlm" (2), from Windows Explorer:

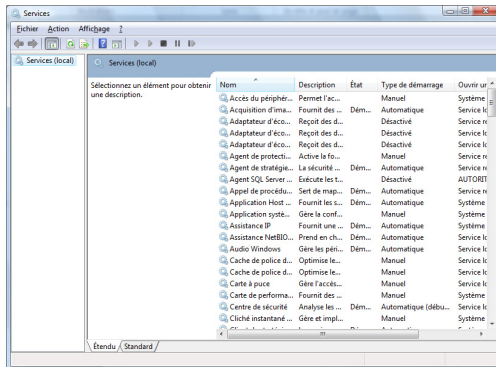
→ Go to the ALPI license directory "Flexlm" during operation (2), default directory sample:

- (2) "C:\Program Files\ALPI\Network License Manager\License" for 32-bit Windows.  
or,  
"C:\Program Files (x86)\ALPI\Network License Manager\License" for 64-bit Windows.

→ Identify and record the date and version of the "lmgrd.exe" and "caneco.exe" files

**Case 1:**

If the working ALPI license directory "Flexlm" (2) contains an older version of the "lmgrd.exe" and "caneco.exe" files than the one of the ALPI service installation directory "Flexlm" (1):



→ Open the Windows services:  
Start> Run> Type "services.msc"

or,

Start> Run> Type "services.msc"

→ Select "Alpi Flexlm service"

→ Click on the "Arrêter le service" (Stop service) button

→ Copy lmgrd.exe and caneco.exe files from the working the ALPI service installation directory "Flexlm" (1) to the working ALPI license directory "Flexlm" (2).


→ Click on "Démarrer le service" (Start service) button to restart the "ALPI flexlm service" service.

**Case 2:**

If the working ALPI license directory "Flexlm" (2) does not contain lmgrd.exe and caneco.exe files

→ Copy lmgrd.exe and caneco.exe files from the working the ALPI service installation directory "Flexlm" (1) to the working ALPI license directory "Flexlm" (2).

**Case 3:**


If the "lmgrd.exe" and "caneco.exe" files were already present on the license directory and if an "ALPI flexlm service" service already existed, go to  "Activating the license on the server".

## H.b Configuring "Flexlm" Softkey service



The license is a file (generally "ALPI.LIC") used by the "Flexlm" license server, which must therefore be installed and configured (using the Lmttools utility) on the ALPI license server computer.

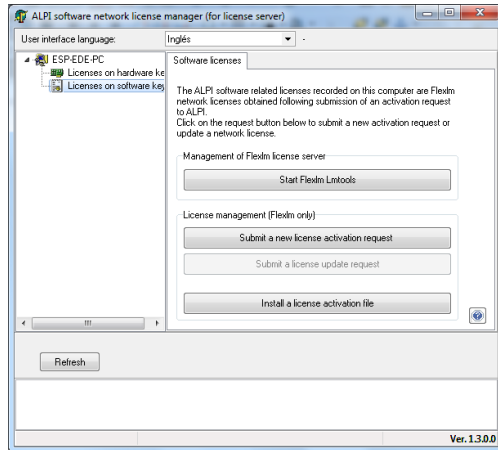
After starting the license manager on the server workstation either:

- Automatically after  "Installing the license manager on server workstation".
- Manually by:

Start > Programs > ALPI > ALPI License Manager (Server)> ALPIImServer.

or,

Start > All programs > ALPI > ALPI License Manager (Server)> ALPIImServer.



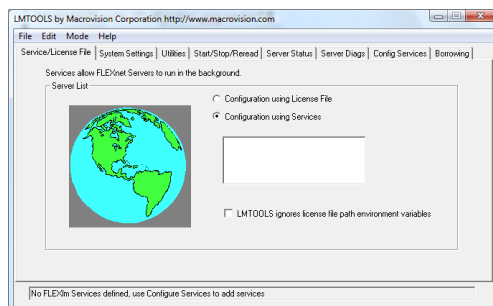
→ In the tree structure on the left of the dialogue box, click "Licences on software key".

→ "Software licenses" tab is displayed to the right of the dialogue box.

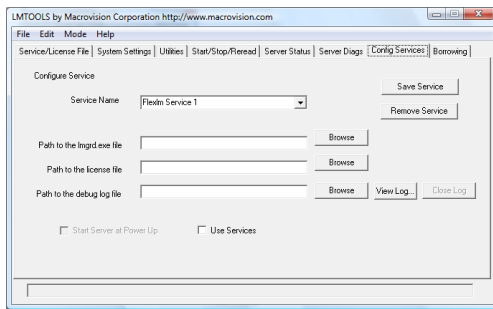
→ Click on the "Start FlexLm Lmtools" button.

### H.b.a Configuring the service in "FlexLm Lmtools":


In the "Service / License File" tab:



→ Select the "Configuration using services" check mark.

In the "Config Services" tab:

→ Expand the "Service Name" list:

- If an "Alpi flexlm Service" service already exists because another ALPI program protected by a "Flexlm" key has already been configured on this server, go to  "Activating the license on the server".
- If "Alpi flexlm Service" does not exist, enter in the "Service Name" field the "Alpi flexlm Service" name
- If other software products installed on the computer use Flexlm, the "Service Name" list contains other services, which must not be changed.

→ In the "Path to lmgrd.exe file" field, enter the path to the Network License Manager "lmgrd.exe" daemon or click the "Browse" button to select the "lmgrd.exe" file which is in the working ALPI license directory "Flexlm" (2).



Never provide the service installation directory Flexlm » (1), since these files are uninstalled at each update.

→ In the "Path to lmgrd.exe file" field, enter the path to the "ALPI.LIC" license file or click the "Browse" button to select the "ALPI.LIC" file which is in the working ALPI license directory "Flexlm" (2).



If the "ALPI.LIC" file does not yet exist (no license ever activated), you must use Windows Explorer to create an empty text file named ALPI.LIC, in the working ALPI license directory "Flexlm" (2).

→ In the "Path to the debug log file" field, enter a path to create a debug log file "ALPIflexlm.LOG" or click the "Browse" button to select the "ALPIflexlm.LOG" file which is in the working ALPI license directory "Flexlm" (2).



If the "ALPIflexlm.LOG" file does not exist, it will automatically be created.

→ Check "Use Services" check mark.

9 - Check "Start Server at power up" check mark (so that the FLEXlm service is started automatically each time the workstation is started).

→ Click on "Save Service" button to save the configuration.

In the event of an error when saving the service configuration:

Error message	Explanation
The license file / license path does not exist where specified	<p>No license file at the specified location: If the "ALPI.LIC" file does not yet exist (no license ever activated), you must use Windows Explorer to create an empty text file named "ALPI.LIC", in the working ALPI license directory "Flexlm" (2).</p> <p>If the file exists, check the spelling of the path that you entered.</p>

### H.b.b Starting the service in "FlexLm Lmtools":

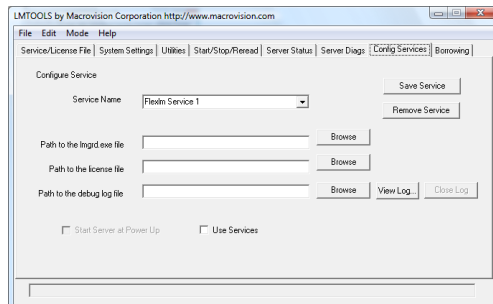


Important note about FIREWALLS :

The lmgrd.exe daemon "listens" for incoming connections on TCP network port (default port 27000). It may be that the firewall installed on the server cuts by default all communications with this port. The network license cannot be accessed.

Remember to configure your firewall (see the documentation for your firewall) to allow incoming traffic to the 2 "lmgrd.exe" and "caneco.exe" programs located in the server license directory, or failing that, to allow incoming TCP traffic on the port 27000.

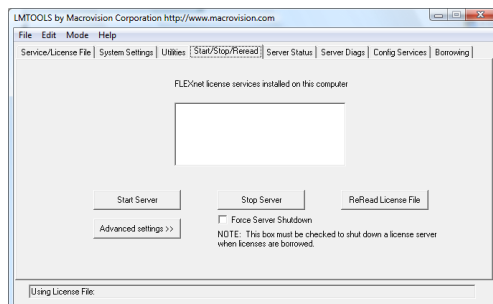
In the "Config Services" tab:



→ Select the "Configuration using services" check mark.

→ Select "ALPI flexlm Service" from the list.

In the "Start/Stop/Reread" tab:



Click on the "Start Server" button

The "Server Start Successful" message is displayed at the bottom of the screen if the server has started.

→ Exit "FlexLM Lmtools".

## H.c Activating the license on the server

A software license requires activation by ALPI after installation on the workstation that uses the license. The activation request must be sent to ALPI by e-mail or a form on the ALPI website. Once activated, the protected program can operate for an unlimited period of time.

To activate a software license, you will need:

- - the key number of your license (specified on the software delivery slip)
- - the name of the computer on which the network license will be installed

The request must be made on the workstation to which the license will belong (= the ALPI license server), but the latter does not need to be connected to the Internet to send the request to ALPI.

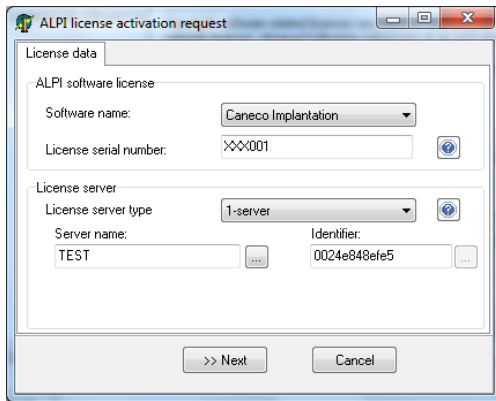
The license manager on the server workstation allows you save the activation request as a file and send it from another PC connected to the Internet.

→ Go back to the license manager on server workstation "ALPIImServer":

→ In the tree structure to the left of the dialogue box, click "Licenses on software key".

→ "Software licenses" tab is displayed to the right of the dialogue box.

→ Click on "Submit a new license activation request".



ALPI license activation request

License data

ALPI software license

Software name: Caneco Implantation

License serial number: XXX001

License server

License server type: 1-server

Server name: TEST

Identifier: 0024e948efe5

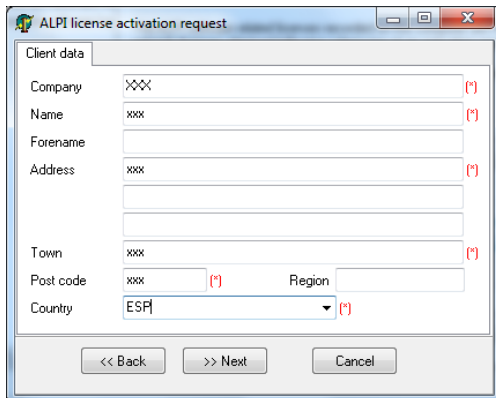
>> Next Cancel

→ The "ALPI license activation request" is displayed.

→ Enter:

- the type of software for which you are activating a license, e.g.: "Caneco Implantation"
- The license serial number (key): SCIRXXX where XXX is an unique key number
- The name of the computer, usually pre-filled.
- The id of the computer, usually pre-filled.

→ Click on "Next" button to validate and continue.



ALPI license activation request

Client data

Company: XXX

Name: xxx

Forename:

Address: xxx

Town: xxx

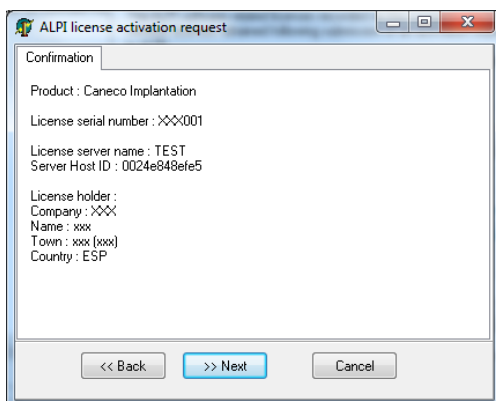
Post code: xxx Region:

Country: ESP

<< Back >> Next Cancel

→ Enter the information about your company and the licensed user.

→ Click on "Next" button to validate and continue.



ALPI license activation request

Confirmation

Product : Caneco Implantation

License serial number : XXX001

License server name : TEST

Server Host ID : 0024e948efe5

License holder :

Company : XXX

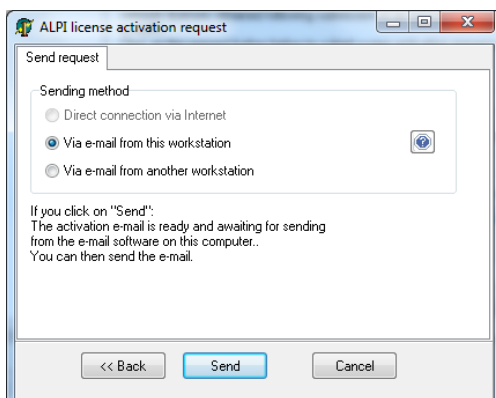
Name : xxx

Town : xxx (xxx)

Country : ESP

<< Back >> Next Cancel

→ Click on "Next" button to confirm licensed user information and continue.



ALPI license activation request

Send request

Sending method

☐ Direct connection via Internet

☒ Via e-mail from this workstation

☐ Via e-mail from another workstation

If you click on "Send":  
The activation e-mail is ready and awaiting for sending from the e-mail software on this computer.  
You can then send the e-mail.

<< Back Send Cancel

→ Select the forwarding method:

- Via e-mail from this workstation:  
"Immediate sending via email from that workstation (the key server)".
- Via e-mail from another workstation:  
"Forwarding via e-mail from another workstation connected to the Internet"

→ Click on "Send" button to continue.

Sending method	Description
Direct connection via Internet	The request is immediately transmitted by direct connection to the ALPI activation server.
Via e-mail from this workstation	<p>The request will be prepared in an e-mail and queued for transmission by the e-mail software on this computer. All that remains is a confirmation of transmission from the e-mail software.</p> <p>Requires that:</p> <ul style="list-style-type: none"> <li>- - this computer is connected to the Internet.</li> <li>- - An e-mail software (client) is installed and configured on this computer.</li> </ul>
Via e-mail from another workstation	The activation request file is prepared and can be saved to an external medium to be sent to ALPI via e-mail from a different workstation which is connected to the Internet and provided with an e-mail software.

### H.c.a Immediate sending via email from that workstation (the key server)

After clicking the "Send" button, your e-mail software opens with a pre-filled mail:

Recipient address = activation@alpi.fr

Purpose: Activation: <name of ALPI software>


Attachment: the XML file containing the activation request

Free text: you can add any comments

→ Send the e-mail

ALPI will reply to your activation request using the address of the e-mail sender. When the e-mail has been sent, the next "ALPI License Activation Request" dialogue box is displayed to notify you that a copy of the XML activation request file has been stored on your computer.

→ Click on "Exit" button and the activation request is complete at this stage

→ When you receive a reply from ALPI with the final activation files for your license, go to  "Installing an ALPI activation file".

### H.c.b Forwarding via e-mail from another workstation connected to the Internet

After clicking the "Send" button, next "ALPI License Activation Request" dialogue box is displayed and provides you with instructions for sending from another workstation.

On the workstation which issued the activation request, the request is now complete.

This is an example of an e-mail for forwarding from another workstation:


Recipient address = activation@alpi.fr

Purpose: Activation: <name of ALPI software>

Attachment: the XML file containing the activation request

Free text: you can add any comments

→ Send the e-mail

→ When you receive a reply from ALPI with the final activation files for your license, go to  "Installing an ALPI activation file".

---

## H.d Installing an ALPI activation file

The ALPI activation file is a final license activation file that you will receive (generally via e-mail) in response to the previous license activation request.

The ALPI activation file shall be installed on the ALPI license "FlexIm" server using the procedure below:

### H.d.a Preliminary preparation

After receiving the final activation response issued by ALPI, you find the attached file whose name ends with .ACT

Example: MYCOMPANY\_CI\_SCIR1234\_2010-08-28.ACT (for license no. SHTR1234 from Caneco Implantation, issued for the company MYCOMPANY)

→ Save on the server workstation the received file in the working ALPI license directory "FlexIm" (2).

### H.d.b Configuring the ALPI activation file

→ Start the license manager on server workstation:

Start > Programs > ALPI > ALPI License Manager (Server)> ALPIImServer.

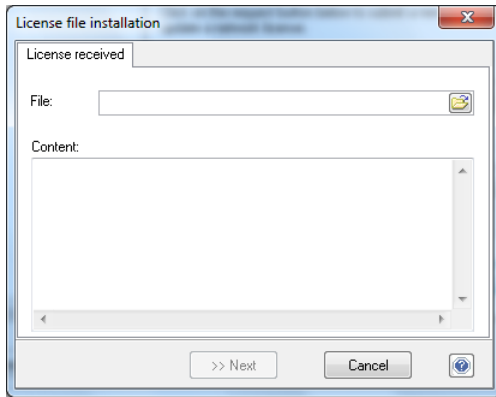
or,

Start > All programs > ALPI > ALPI License Manager (Server)> ALPIImServer.

→ In the tree structure to the left of the dialogue box, click "Licences on software key".


→ "Software licenses" tab is displayed to the right of the dialogue box.

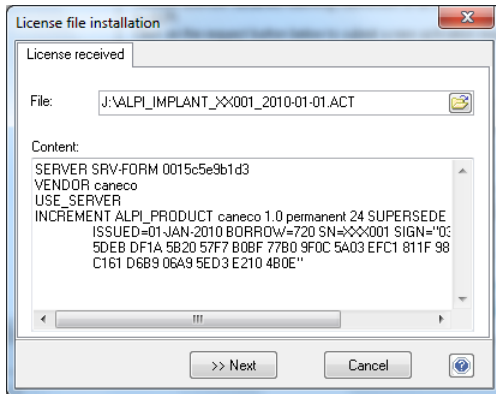
→ Click on "Install a license activation file" button



→ The "Install license file" dialogue box is displayed.

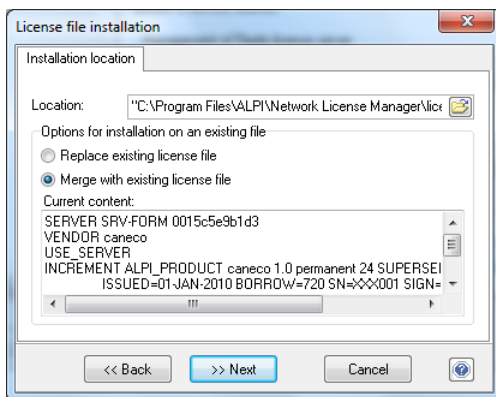
→ Click on the file selection icon

→ Select the file received, the one named in the  "Preliminary preparation".



→ Contents of the license file displayed for verification.

→ Click on "Next" button to continue.



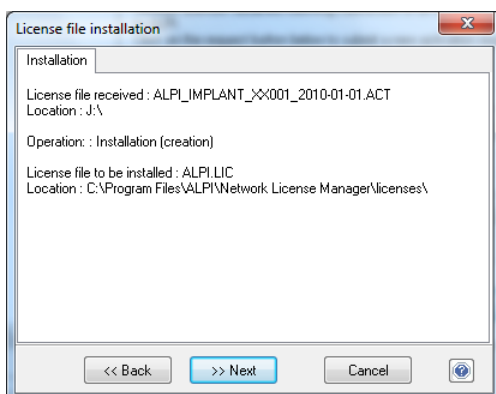
→ Select a location for the license file

A default "ALPI.LIC" file is selected from the working ALPI license directory "FlexIm" (2). The "ALPI.LIC file" will be created, and completed with the data from the activation file.

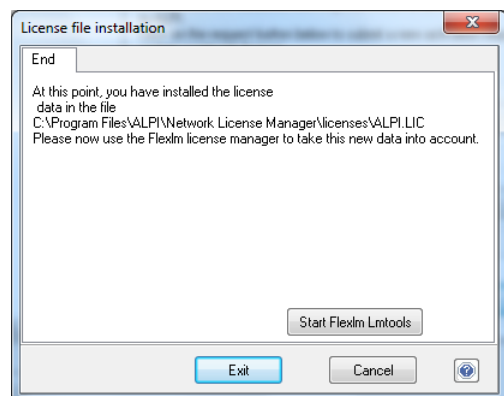
→ If a "ALPI.LIC" file is already present, select the option:


- "Replace existing license file", when there is only one ALPI software installed and the license has expired.
- "Merge with existing license file", when there are several ALPI software installed.

→ Click on "Next" button to continue.



→ Click on "Next" button to confirm.



The "ALPI.LIC" license file has been updated with the new activation data, but the server still has to be  "Stopping and restarting the "Flexlm" Softkey service " for changes to be taken into account.

→ Click on the "Start Flexlm Lmtools" button.

#### **H.d.c Stopping and restarting the "Flexlm" Softkey service**

In the "Config Services" tab:

→ Select the "Configuration using services" check mark.

→ Select "ALPI flexlm Service" from the list.

In the "Start/Stop/Reread" tab:

→ Check the "Force Server Shutdown" check mark.

→ Click on "Stop Server" button, the "Stopping server" message is displayed to the bottom of the screen.

→ Click on "Start Server" button, the "Server Start Successful" message is displayed at the bottom of the screen if the server has started.

## I Software installation

→ Insert the CD-ROM into the drive.

→ Automatic start of the installation or manually in Windows Explorer, go to the root of the CD drive and run "SelectLg.exe".

→ Select the language of the installation wizard.

→ Select the type of installation depending on the type of Alpi Client:

For customers with the Caneco Implantation OEM 2008 or 2011 graphics engine:

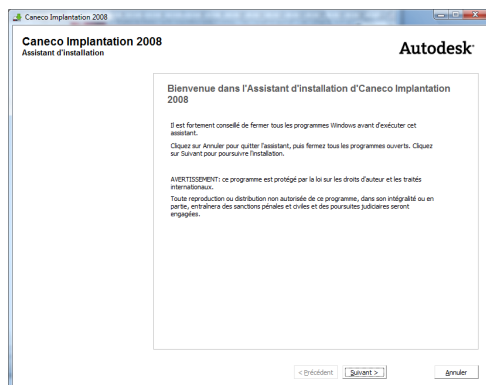


Caneco Implantation OEM 2008 and 2011 is available only in French.

- For customers having purchased Caneco Implantation OEM 2008 or 2011 graphics engine:
  - Click on "Install Caneco Implantation OEM 2008" or "Install Caneco Implantation OEM 2011".
  - Once the installation is completed, click "Install Caneco V2.5.1 Implantation".

### I.a Installing Caneco Implantation OEM

After selecting "Install Caneco Implantation OEM" from the menu of the software installation CD, the installation wizard starts:



→ Click on "Suivant" (Next) button to continue.

→ Select products to be installed and click the "Suivant" (Next) button to continue.

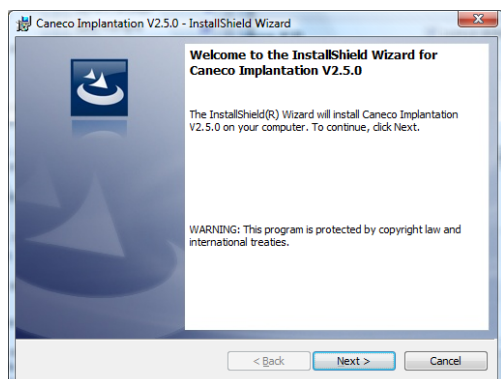
→ Accept the user license agreement and click the "Suivant" (Next) button to continue.

→ Click on the "Installer" (Install) button

→ Once the installation is complete, click on "Terminer" (Finish) to exit.


## I.b Installing Caneco Implantation V2.5.1

After selecting "Install Caneco Implantation V2.5.1" from the menu of the software installation CD, the installation wizard starts:



- Click on "Suivant" (Next) button to continue.
- Accept the user license agreement and click the "Suivant" (Next) button to continue.
- Enter the user and organization, and then click the "Suivant" (Next) button to continue.
- Click on "Suivant" (Next) button to continue (destination directory can be changed)
- Click on the "Installer" (Install) button

→ The "Penser à mettre à jour la version de Caneco BT" (Remember to update the Caneco LV) dialogue box is displayed.

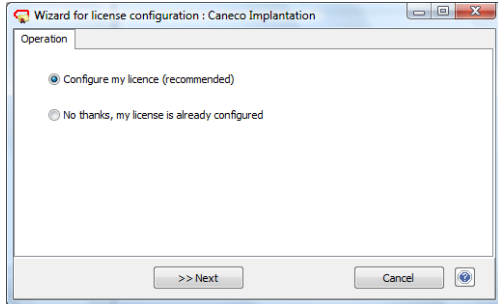
→ The license manager on "ALPIImClient" user workstation installs and runs automatically. The "Assistant de configuration de licence" (License configuration wizard): Caneco Implantation" dialogue box is displayed, and then apply the  "Configuring license key in the license manager on user workstation".

→ Once the installation is complete, click on "Terminer" (Finish) button to exit.

## J Configuring license key in the license manager on user workstation

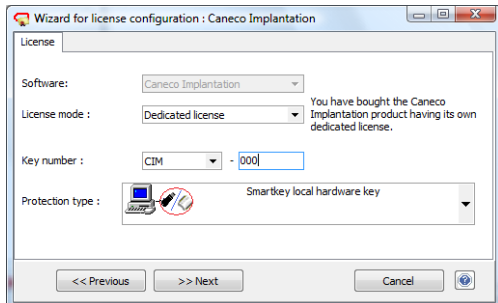
### J.a Dedicated Dongle on user workstation of the CIM or CIM-RK type

After displaying of "License configuration wizard": "Caneco Implantation" dialogue box:



→ Select the "Configure my license (recommended)" check mark

→ Click on "Next" button to continue.



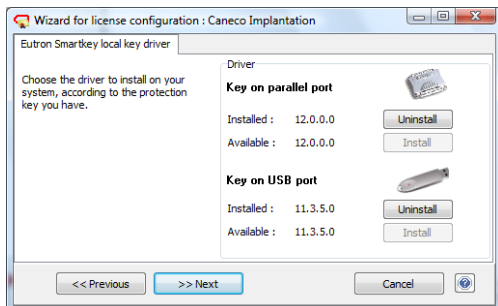
→ From the "Licensing Mode" dropdown, select "Dedicated license".

→ The dropdown and a "Key Number" field are displayed.

→ In the "Key Number" dropdown, select "CIM" or "CIM-RK".

→ In the "Key Number" field, enter the unique key number.

→ Click on "Next" button to continue.

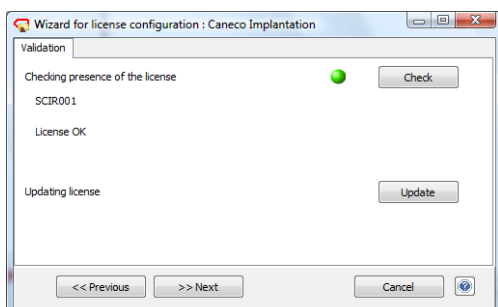


Only for "// Smartkey" or "USB SmartKey":

→ Click on "Install" button to install the key drivers either:

- on USB port.
- on parallel port.

→ Click on "Next" button to continue.



→ The automatic verification starts.

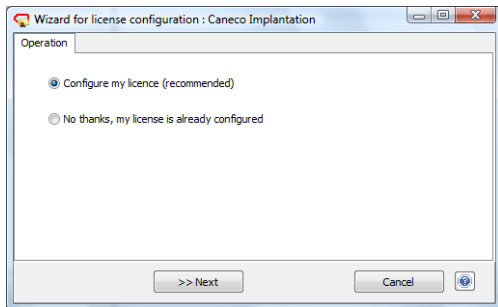
→ Click on "Next" button to continue.

→ Click on "Finish" button and the license is configured on the user workstation.

→ Exit the license manager on the user workstation and go to  "Software start-up".

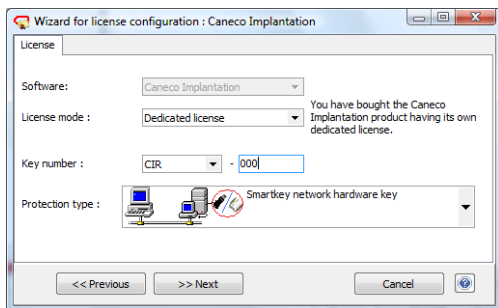
## J.b Dedicated Dongle on user workstation of the CIR or CIR-RK type

After displaying of "License configuration wizard": "Caneco Implantation" dialogue box:



→ Select the "Configure my licence (recommended)" check mark

→ Click on "Next" button to continue.



→ From the "Licensing Mode" dropdown, select "Dedicated license".

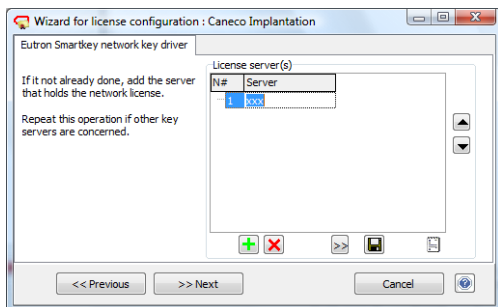
→ The dropdown and a "Key Number" field are displayed.

→ In the "Key Number" dropdown, select "CIR" or "CIR-RK".

→ In the "Key Number" field, enter the unique key number.

→ Click on "Next" button to continue.


→ Either:



- If in the "Server(s)" list, the key server is not present:

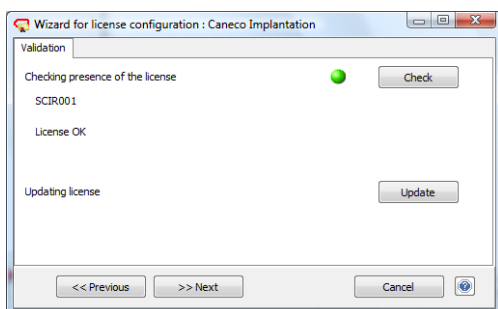
→ Click on  button to add a key server.

→ In the "Server(s)" list, enter server name or IP address of the server.

→ Click on  button to save the key server.

→ Click on "Next" button to continue.

- If in the "Server(s)" list, the key server is present, click on "Next" button to continue



→ The automatic verification starts.

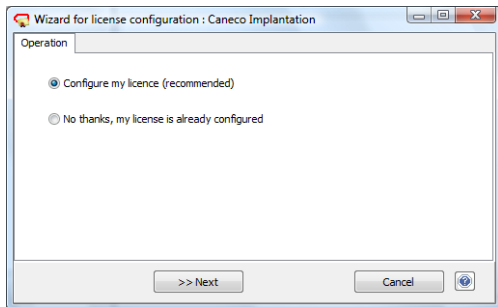
→ Click on "Next" button to continue.

→ Click on "Finish" button and the license is configured on the user workstation.

→ Exit the license manager on the user workstation and go to  "Software start-up".

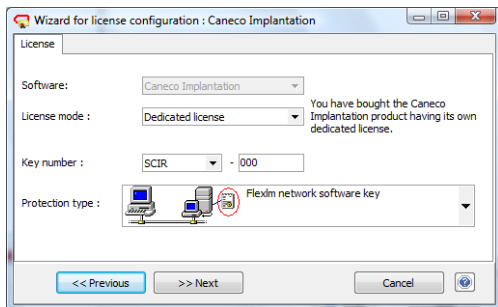
## J.c Dedicated Softkey on the server workstation of the SCIR type

After displaying of "License configuration wizard": "Caneco Implantation" dialogue box:



→ Select the "Configure my licence (recommended)" check mark

→ Click on "Next" button to continue.



→ From the "Licensing Mode" dropdown, select "Dedicated license".

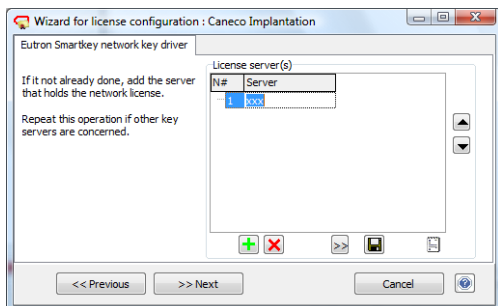
→ The dropdown and a "Key Number" field are displayed.

→ In the "Key Number" dropdown, select "SCIR".

→ In the "Key Number" field, enter the unique key number.

→ Click on "Next" button to continue.


→ Either:



- If in the "Server(s)" list, the key server is not present:

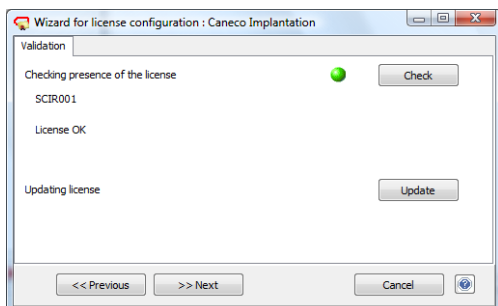
→ Click on  button to add a key server.

→ In the "Server(s)" list, enter server name or IP address of the server.

→ Click on  button to save the key server.

→ Click on "Next" button to continue.

- If in the "Server(s)" list, the key server is present, click on "Next" button to continue



→ The automatic verification starts.

→ Click on "Next" button to continue.

→ Click on "Finish" button and the license is configured on the user workstation.

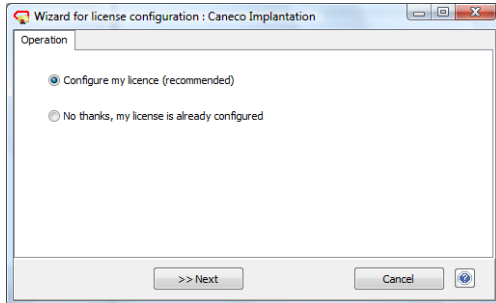
→ Exit the license manager on the user workstation and go to  "Software start-up".

## J.d Dongle module key on user workstation of the BTM BTM-RK, BTR, BTR-RK, SBTR type



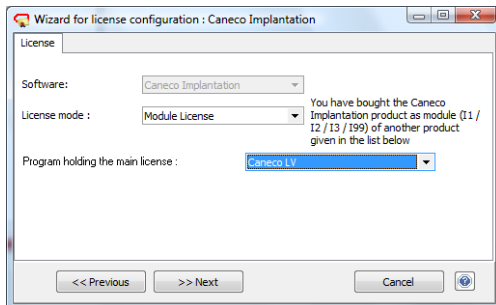
The Caneco LV license must be configured prior to installing the Caneco LV Caneco Implantation module license.

After displaying of "License configuration wizard": "Caneco Implantation" dialogue box:



→ Select the "Configure my licence (recommended)" check mark

→ Click on "Next" button to continue.

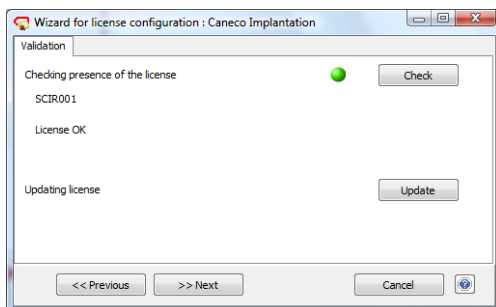


→ From the "Licensing Mode" dropdown, select "Module license".

→ The dropdown and a "Program holding the main license" field are displayed.

→ From the "Program holding the main license" dropdown, select "Caneco LV".

→ Click on "Next" button to continue.



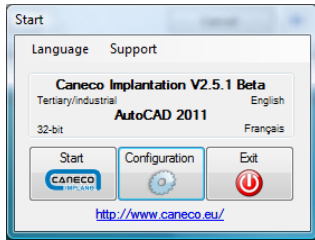
→ The automatic verification starts.

→ Click on "Next" button to continue.

→ Click on "Finish" button and the license is configured on the user workstation.

→ Exit the license manager on the user workstation and go to  "Software start-up".

## K Software start-up

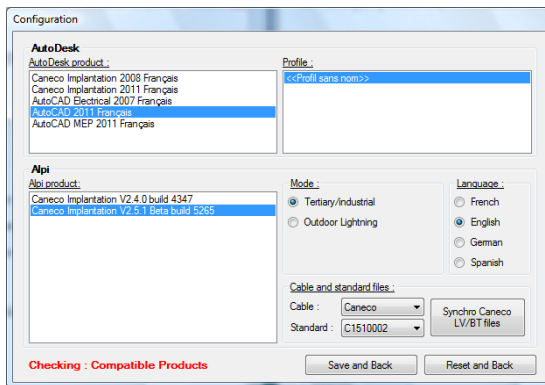


→ Click on the icon created on your desktop.

→ The "Start" dialogue box is displayed

→ Click on the "Configuration" button

→ The "Configuration" dialogue box is displayed



In the "Autodesk" box:

→ Select from the "Autodesk product" list, the Autodesk product.



If no Autodesk product is displayed:

- Check product compatibility.
- Check whether an Autodesk product is installed

→ Select "Profile".

In the "Alpi" box:

→ Select from the "Alpi product" list, the Alpi product.

→ Select the "mode" for using Alpi product:

- Tertiary / Industrial
- Street lighting

→ Select the "language" of the Alpi product:

- French
- English
- Spanish
- German

→ Click on "Save and Back" button to save the settings.

→ Back to the "Start" dialogue box which is displayed

→ Click on "Start" button to start the software.

## L Configuring the firewall

All types of network protection key delivered by ALPI use a Windows key service, which "listens" for requests for access to the key via the network.

This requires configuring the potential Firewall on the server computer.

According to the firewalls, either the program (EXE) or a port and protocol shall be authorised.  
Below is the list of programs, ports and protocols installed by default when key services are installed.

---

### L.a Eutron SmartKey dongle

→ Enable the program:

"C:\Windows\System32\SkeySrv.exe"  
(Or rarely "C:\Windows\System32\ASkeySrv.exe")

→ Enable the port (Protocol):

"5500 (TCP)"

---

### L.b Rockey dongle

→ Enable the program:

"C:\Program Files\ALPI\Network License Manager\Rockey Server\NrSvr.exe" for 32-bit Windows.  
or,  
"C:\Program Files (x86)\ALPI\Network License Manager\Rockey Server\NrSvr.exe" for 64-bit Windows.

→ Enable the port (Protocol):

"3152 (TCP and/or UDP)"

---

### L.c FlexIm softkey

→ Enable the program:

"C:\Program Files\ALPI\Network License Manager\Licenses\lmgrd.exe" for 32-bit Windows.  
"C:\Program Files\ALPI\Network License Manager\Licenses\caneco.exe" for 32-bit Windows.  
or,  
"C:\Program Files (x86)\ALPI\Network License Manager\Licenses\lmgrd.exe" for 64-bit Windows.  
"C:\Program Files (x86)\ALPI\Network License Manager\Licenses\caneco.exe" for 64-bit Windows.

→ Enable the port (Protocol):

"27000 (TCP)"

## M Advanced configuration of the "Flexlm" service


### M.a How to define advanced configuration

The advanced configuration of "Flexlm" server involves setting up an options file (\*.OPT), loaded at the time the "Flexlm" service starts, along with the reading of license file (\*.LIC).

#### M.a.a Adding an option file

In the same directory as the "ALPI.LIC" license file:

→ Create or edit an "ALPI.opt" file (in text format).

→ Place options according to the recommendations of the Flexlm guide  "Examples of advanced configurations".

→ Edit the Flexlm license file, generally "ALPI.LIC" located in:

"C:\Program Files\ALPI\Network License Manager\ License" for 32-bit Windows.


or,

"C:\Program Files (x86)\ALPI\Network License Manager\ License" for 64-bit Windows.

→ On the "VENDOR Caneco" line (dedicated to ALPI), add the parameter "option = Alpi.opt".


Example:


License file WITHOUT ALPI option file	License file WITH ALPI option file
SERVER UC97 001aa0bd613a VENDOR Caneco USE_SERVER INCREMENT BT ... [...]	SERVER UC97 001aa0bd613a VENDOR Caneco options=ALPI.opt USE_SERVER INCREMENT BT ... [...]

→  "Stopping and restarting the "Flexlm" Softkey service " with the tool "Imtools" to reread the license file and the modified/created option file data.


#### M.a.b Changing option file

→ Edit the "ALPI.opt" file (in text format).

→ Place/modify options according to the recommendations of the Flexlm guide  "Examples of advanced configurations".

→  "Stopping and restarting the "Flexlm" Softkey service "with the tool" Imtools" to reread the license file AND the modified/created option file data.

#### M.a.c Content of the option file

The option file is a text file. Lines containing the definition of an option start with a keyword  "Examples of advanced configurations". Comment lines can be inserted (ignored by the system but available to administrator(s) to improve the plain meaning of the options): a comment line starts with # (pound).

---

## M.b Examples of advanced configurations

### M.b.a Access to the network license: include/exclude users

Certain users can be allowed to access / prevented from accessing the Flexlm server network license for an ALPI product.

Keyword: `INCLUDE` or `EXCLUDE`

Accesses can be specified:

- Per user (USER) [corresponding to the Windows login].
- per user group (GROUP) [caution: the Flexlm GROUP concept has nothing to do with groups in Windows].
- per machine (HOST) [corresponding to Windows name of the machine].
- per groups of machines (HOST\_GROUP) [caution: the HOST\_GROUP concept is specific to Flexlm].

Examples for a server with 10 network licenses for LV:

#### Example 1:

```
# Allow only "login1" and "login2" users
# to access the license
INCLUDE    BT    USER    login1
INCLUDE    BT    USER    login2
# => All other users are prohibited
```

#### Example 2:

```
# Allow only "login1" and "login2" users
# to access the license
# though the definition of a group
# named for the example "trusted_bt"
GROUPCASEINSENSITIVE OFF
GROUP trusted_bt login1 login2
INCLUDE    BT    GROUP    trusted_bt
# => All other users are prohibited
```

#### Example 3:

```
# Prevent the user "doe" to access the license
EXCLUDE    BT    USER    doe
# => All other users are allowed
```

#### Example 4:

```
# Allow only the users) of the machine "UC12345"
# to access the license
INCLUDE    BT    HOST    UC12345
# => any access from another machine will be denied
```

**Example 5:**

```
# Allow only the user(s) of a set of machines
# = « UC5 », « UC6 » et « UC7 »
# to access the license
# through the definition of a group of machines
# named for the example "CalcDeptComputers"
GROUPCASEINSENSITIVE OFF
HOST_GROUP  CalcDeptComputers  UC5 UC6  UC7
INCLUDE     BT  HOST_GROUP  CalcDeptComputers
# => any access from another machine will be denied
```



Note: In the event of combined use of `INCLUDE` and `EXCLUDE` and presence of conflict (e.g., login1 appearing in both clauses: how the system will react for login1?) The `EXCLUDE` clause takes precedence.

**M.b.b Network license borrowing: set a limit**

On the server, you can limit the number of network licenses to be borrowed locally. In other words, a number of licenses that can never be borrowed may be left on the server.

Keyword: `BORROW_LOWATER`

Example for a server with 10 network licenses for LV (LV = Caneco LV) and 3 for HV (= Caneco HV)

```
# Store permanently 3 Caneco LV licenses on the server
BORROW_LOWATER  LV    3
# Store permanently 1 Caneco HV license on the server
BORROW_LOWATER  HV    1
# ... The remainder can be borrowed
```

**M.b.c Network license borrowing: include/exclude users**

Certain users can be allowed to access / prevented from locally borrowing one Flexlm server network license for an ALPI product.

Keyword: `INCLUDE_BORROW` or `EXCLUDE_BORROW`

Limitations can be specified:

- Per user (USER) [corresponding to the Windows login].
- per user group (GROUP) [caution: the Flexlm GROUP concept has nothing to do with groups in Windows].
- per machine (HOST) [corresponding to Windows name of the machine].
- per group of machines (HOST\_GROUP) [caution: the HOST\_GROUP concept is specific to Flexlm].

**Example 1:**

```
# Allow only "login1" and "login2" users
# to borrow locally a license
INCLUDE_BORROW  BT  USER  login1
INCLUDE_BORROW  BT  USER  login2
# => All other users can not borrow
```

Example 2:

```
# Allow only "login1" and "login2" users
# to borrow locally a license
# through the definition of a group
# named for the example "borrow_lv"
GROUPCASEINSENSITIVE OFF
GROUP borrow_lv login1 login2
INCLUDE_BORROW BT GROUP borrow_lv
# => All other users can not borrow
```

Example 3:

```
# Prevent the user "doe" to borrow locally a license
EXCLUDE_BORROW BT USER doe
# => All other users are allowed
```

Example 4:

```
# Allow only the user(s) of the machine "laptop2"
# (typically 1 laptop) to borrow the license
INCLUDE_BORROW BT HOST laptop2
# => Any attempt to borrow from another machine will be denied
```

Example 5:




```
# Allow only the user(s) of a set of machines
# = "Laptop1", "laptop2" and "laptop3"
# to borrow locally 1 license
# through the definition of a group of machines
# named for the example "LaptopComputers"
GROUPCASEINSENSITIVE OFF
HOST_GROUP LaptopComputers laptop1 laptop2 laptop3
INCLUDE_BORROW BT HOST_GROUP LaptopComputers
# => Any attempt to borrow from another machine will be denied
```



Note: In the event of combined use of `INCLUDE_BORROW` and `EXCLUDE_BORROW` and presence of conflict (e.g., login1 appearing in both clauses: how the system will react for login1?) The `EXCLUDE_BORROW` clause takes precedence.

## N Troubleshooting

Description	Solution
Start the license manager on server workstation	Start > Programs > ALPI > ALPI License Manager (Server)> ALPIImServer. or, Start > All programs > ALPI > ALPI License Manager (Server)> ALPIImServer.
Uninstall the drivers/key drivers from the license manager on the server machine	→ Start the license manager on server workstation Start > Programs > ALPI > ALPI License Manager (Server)> ALPIImServer. or, Start > All programs > ALPI > ALPI License Manager (Server)> ALPIImServer.  → In the tree structure on the left of the dialogue box, click "Licenses on hardware key" (Dongle licenses).  → "Licenses on hardware key" tab is displayed to the right of the dialogue box.  → In the "Eutron Smartkey driver" box, click on the button(s) "Uninstall" to install: <ul style="list-style-type: none"> <li>- Key driver on parallel port</li> <li>- Key driver on USB port</li> </ul>
Install the drivers/key drivers from the tool SDI (SmartKey Driver Installer)	→ From Windows Explorer, go to: "XX:\Tools\sdi\sdi.exe" where XX is the DVD/CD-ROM drive containing the Caneco Implantation installation CD .  → Double-click on "SDI.exe" for starting.  → In the tab: <ul style="list-style-type: none"> <li>- USB: click on the "Install" button(s) to install the USB key driver.</li> <li>- Parallel: click on the "Install" button(s) to install the parallel key driver.</li> </ul> → Check that in the "Status" box, the "Enabled" check mark is checked.
Uninstall the drivers/key drivers from the tool SDI (SmartKey Driver Installer)	→ From Windows Explorer, go to: "XX:\Tools\sdi\sdi.exe" where XX is the DVD/CD-ROM drive containing the Caneco Implantation installation CD .  → Double-click on "SDI.exe" for starting.  → In the tab: <ul style="list-style-type: none"> <li>- USB: click on the "Uninstall" button(s) to install the USB key driver.</li> <li>- Parallel: click on the "Uninstall" button(s) to install the parallel key driver.</li> </ul> → Check that in the "Status" box, the "Enabled" check mark is checked.

Description	Solution
Start Eutron SCC (Smartkey Configuration Central) to configure the dongle on server workstation	<p>From Windows Explorer, go to: "XX:\Tools\scc\scc.exe" where XX is the DVD/CD-ROM drive containing the Caneco Implantation installation CD .</p> <p>→ Double-click on "SCC.exe" for starting.</p> <p>→  "Configuring Dongle on server workstation".</p>
Install the license manager manually on user workstation with version checking.	<p>From Windows Explorer, go to: "XX:\Tools\InstallKey2.exe" where XX is the DVD/CD-ROM drive containing the Caneco Implantation installation CD .</p> <p>→ Double-click on "InstallKey2" for starting.</p>
Install the license manager manually on user workstation without version checking.	<p>From Windows Explorer, go to: "XX:\Tools\SetupALPImclient-[A.B.C.D].exe" where XX is the DVD/CD-ROM drive containing the Caneco Implantation installation CD .</p> <p>→ Double-click on "SetupALPImclient-[A.B.C.D].exe" for starting.</p> <p>Note: A.B.C.D is the version number.</p>
Start the license manager on user workstation	<p>Start&gt; Programs&gt; ALPI&gt; ALPI License Manager&gt; Imclient ALPI (User workstation).</p> <p>or,</p> <p>Start&gt; All programs&gt; ALPI&gt; ALPI License Manager&gt; Imclient ALPI (User workstation).</p>
Add a Caneco Implantation license to the license manager on user workstation	<p>→ Start the license manager on server workstation Start&gt; Programs&gt; ALPI&gt; ALPI License Manager&gt; Imclient ALPI (User workstation).</p> <p>or,</p> <p>Start&gt; All programs&gt; ALPI&gt; ALPI License Manager&gt; Imclient ALPI (User workstation).</p> <p>→ Click on the  button</p> <p>→ In the "Software" dropdown, select Caneco Implantation.</p> <p>→  "Configuring license key in the license manager on user workstation".</p>
Protection key not found in the license manager on user workstation	<p>→ Check :</p> <ul style="list-style-type: none"> <li>- that drivers have been properly installed.</li> <li>- for key type and number.</li> <li>- for the name or IP address of the key server .</li> </ul>

Description	Solution
<p>Problem when starting the software for dedicated keys of the "CIM", "CIM-RK", "CIR", "CIR-RK", "SCIR" type</p>	<p>→ Check :</p> <ul style="list-style-type: none"> <li>- that the "alpi_imp.sys", "CanIMPL.dat", "CanIMPP.dat" files are in the directory "C:\Program Files\Common Files\Alpi Shared" for 32-bit Windows XP</li> <li>or, "C:\Program Files\Common Files\Alpi Shared" for 32-bit Windows Vista and 7</li> <li>or, "C:\Program Files(x86)\Common Files\Alpi Shared" for 64-bit Windows Vista and 7</li> </ul>
<p>Problem when starting the software for module key of the "BTM", "BTM-RK", "BTR", "BTR-RK", "SBTR" type</p>	<p>→ Check :</p> <p>that the "alpi.sys", "alpi.dat", "canbtl.dat", "canbtp.dat" files are in the directory "C:\Program Files\Common Files\Alpi Shared" for 32-bit Windows XP</p> <p>or,</p> <p>"C:\Program Files\Common Files\Alpi Shared" for 32-bit Windows Vista and 7</p> <p>or,</p> <p>"C:\Program Files(x86)\Common Files\Alpi Shared" for 64-bit Windows Vista and 7</p>
<p>Problem with expired license key when starting the software</p>	<p>→ Download from site <a href="http://www.alpi.fr/">http://www.alpi.fr/</a> updates of keys.</p> <p>→ Contact the sales department.</p>